

SURVEY DATA AROUND DRAINFIELD SITES

| Course | Bearing | Distance |
|-----------|------------|----------|
| LOT NO. 1 | | |
| DF1-DF2 | S 05°30' W | 80.1' |
| DF2-DF3 | N 68°05' E | 48.9' |
| DF3-DF4 | N 08°23' E | 79.1' |
| DF4-DF1 | S 67°58' E | 44.8' |
| LOT NO. 2 | | |
| DF1-DF2 | S 18°22' W | 42.3' |
| DF2-DF3 | N 87°59' W | 103.1' |
| DF3-DF4 | N 16°26' E | 87.5' |
| DF4-DF1 | S 73°50' E | 101.3' |
| LOT NO. 3 | | |
| DF1-DF2 | S 63°15' E | 74.3' |
| DF2-DF3 | S 27°57' W | 57.7' |
| DF3-DF4 | N 70°51' W | 61.7' |
| DF4-DF1 | N 16°26' E | 66.9' |
| LOT NO. 4 | | |
| DF1-DF2 | N 17°13' E | 52.8' |
| DF2-DF3 | S 63°18' E | 83.6' |
| DF3-DF4 | S 19°00' W | 36.6' |
| DF4-DF1 | N 73°04' W | 81.3' |
| LOT NO. 5 | | |
| DF1-DF2 | N 86°12' E | 63.3' |
| DF2-DF3 | S 08°11' E | 99.0' |
| DF3-DF4 | N 88°58' W | 67.5' |
| DF4-DF1 | N 06°00' W | 93.1' |

ADJOINER INFORMATION:

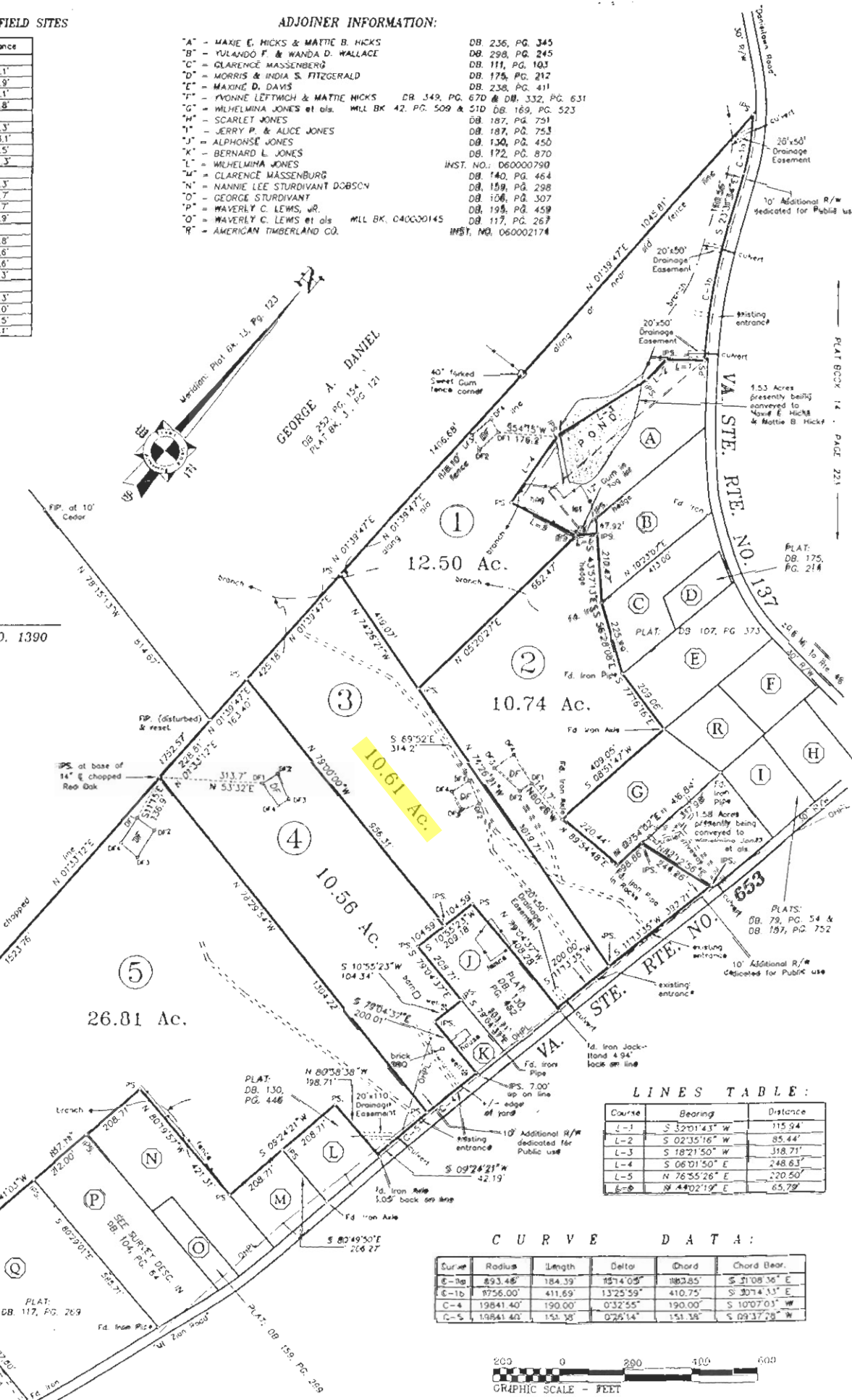
- "A" - MARIE E. MICKS & MATTIE B. HICKS DB 236, PG. 345
- "B" - YULANDO F. & WANDA D. WALLACE DB 298, PG. 245
- "C" - CLARENCE MASSENBERG DB 111, PG. 103
- "D" - MORRIS & INDIA S. FITZGERALD DB 175, PG. 212
- "E" - MAXINE D. DAVIS DB 238, PG. 411
- "F" - YVONNE LEFTWICH & MATTIE NICKS DB 349, PG. 670 & DB 332, PG. 631
- "G" - WILHELMINA JONES et als. MLL BK 42, PG. 509 & 510 DB 169, PG. 523
- "H" - SCARLET JONES DB 187, PG. 751
- "I" - JERRY P. & ALICE JONES DB 187, PG. 753
- "J" - ALPHONSE JONES DB 130, PG. 450
- "K" - BERNARD L. JONES DB 172, PG. 870
- "L" - WILHELMINA JONES INST. NO. D60000790
- "M" - CLARENCE MASSENBERG DB 140, PG. 464
- "N" - NANNIE LEE STURDIVANT DOBSON DB 159, PG. 298
- "O" - GEORGE STURDIVANT DB 106, PG. 307
- "P" - WAVERLY C. LEWIS, JR. DB 195, PG. 459
- "Q" - WAVERLY C. LEWIS et als. MLL BK 040G00145 DB 117, PG. 267
- "R" - AMERICAN TIMBERLAND CO. INST. NO. 060002174



WARREN A. TRENT - PLS. NO. 1390

MARY F. CLARY
INST. NO. 040030214
PLAT BK. 13, PG. 123

ERVINE E. MOORE, JR. &
DEBORAH P. MOORE
DB 292, PG. 827 &
DB 293, PG. 451



LINES TABLE:

| Course | Bearing | Distance |
|--------|---------------|----------|
| L-1 | S 32°01'43" W | 115.94' |
| L-2 | S 02°35'16" W | 85.44' |
| L-3 | S 18°21'50" W | 318.71' |
| L-4 | S 06°01'50" E | 248.63' |
| L-5 | N 76°55'26" E | 220.50' |
| L-6 | N 44°02'19" E | 65.79' |

CURVE DATA:

| Curve | Radius | Length | Delta | Chord | Chord Bear. |
|-------|-----------|---------|-----------|----------|---------------|
| C-1a | 893.48' | 184.39' | 15°14'05" | 188.285' | S 21°08'36" E |
| C-1b | 875.00' | 411.69' | 13°25'59" | 410.75' | S 30°14'33" E |
| C-4 | 19841.40' | 190.00' | 0°32'55" | 190.00' | S 10°07'03" W |
| C-5 | 19841.40' | 151.35' | 0°26'14" | 151.35' | S 09°37'28" W |



DATE: APRIL 10, 2007
SCALE: 1" = 200'
FILE: T06506E.dwg

IMPORTANT INFORMATION OF SHEET 1 of 2 THAT AFFECTS THE PARCELS SHOWN HEREON

SHEET 2 of 2

TRENT LAND SURVEYING
11138 Lunenburg County Road
Keysville, Virginia 23947

