

R/W  
34 p.131

# State Route No. 623

BRG=S72°49'54"E Hardwood Hills

L=124.63'  
R=774.47'  
Δ=09°13'13"  
C LEN=124.50'  
BRG=S82°28'39"E

0.15mi.± To  
Rte. 657



TM58-38C  
Now or Formerly  
Virgie Lloyd  
D.B.170 p.146  
w/plat

2.90 Acres  
TM58-38B

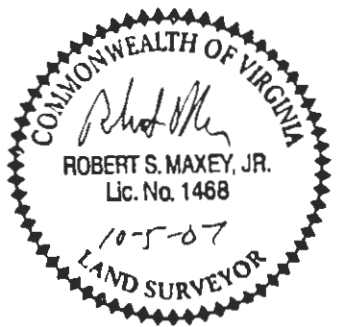
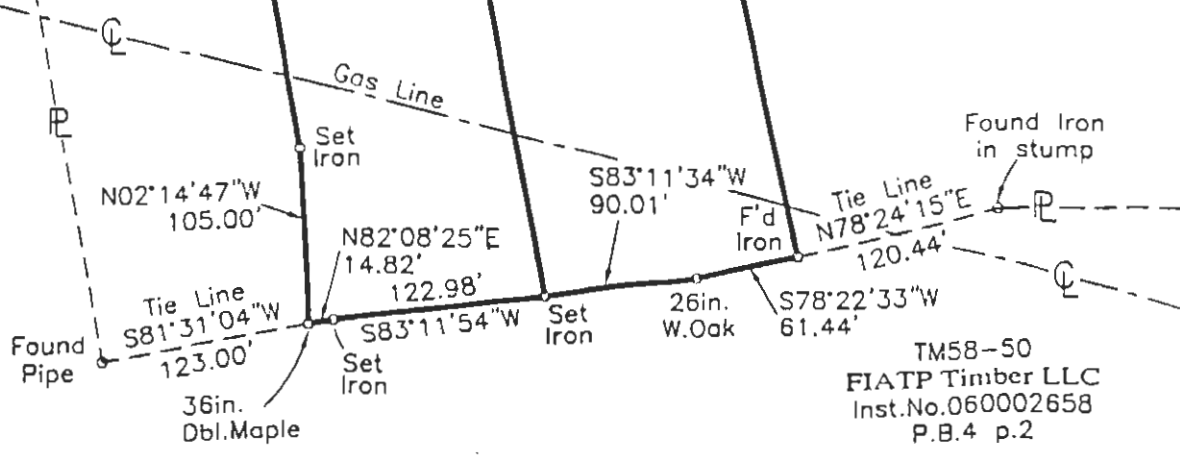
3.08 Acres  
TM58-38A

TM58-38  
Ernest E. Queen  
Lita T. Queen  
D.B.256 p.726  
Plat D.B.247 p.88

N09°14'48"W 941.65'

S09°34'02"E 1015.57'

S11°21'24"E 957.00'



TM58-50  
FIATP Timber LLC  
Inst.No.060002658  
P.B.4 p.2

Boundary Survey  
for  
**American Timberland Company**  
General Sweets Association Lumber Company